

Tasmanian logging photos, from 2005 to 2008.

Is this the sort of logging that you want to endorse.

Is this really as we are told here

World's Best Practice ?

Show prepared by Pete Godfrey

This slide show documents Gunns activities in converting native forest to eucalypt plantations. And operations by Forestry Tasmania and by Rayonier on State Forest Land

Gunns claim that they are no longer converting native forest to plantations but as can be seen they are still converting native forest

According to Gunns native forest estate policy they stopped conversion of native forest to plantation after the 1<sup>st</sup> June 2007.

Gunns have been sending letters to local businesses and telling them that they have stopped converting native forest to plantation but they have not

Gunns ltd are not honourable men, they tell lies to the people of Tasmania, to business people and to the Government.

Gunns logging operations regularly breach the Tasmanian Forest Practices code. The industry here is Self Regulating and Self Policing so they cannot be trusted.





Bird nest in a eucalypt tree, the nests are destroyed when the trees are cut down.



Gog Ranges April 2007 (State Forest)  
land in back cleared by Gunns Ltd

FORESTRY  
TASMANIA  
TREE  
FELLING  
PROHIBITED





Garden of Eden ( Gog Ranges) 6 years after logging (landslip area)





**TAMAR**

OPERATION NO

COUPE

CATEGORY

U.H.F. CHANNEL

PHONE RECEPTION

EMERGENCY MEETING  
POINT NO



# BU108B Gunns coupe on State Forest Land







Bad Road works Gog Ranges May 2006

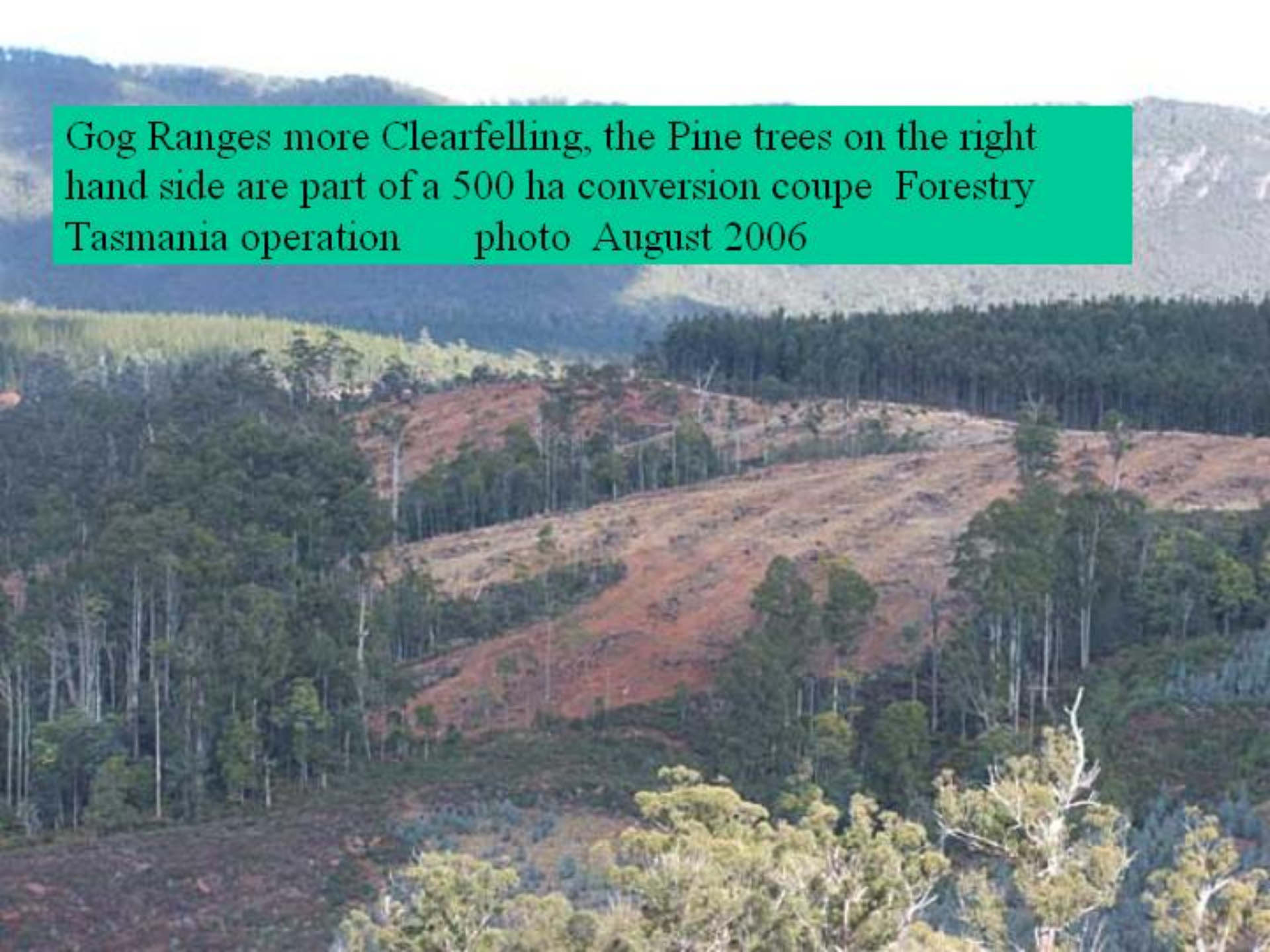


BU108B Gunns coupe on State Forest Land Gog Ranges April 2006





Gog Ranges more Clearfelling, the Pine trees on the right hand side are part of a 500 ha conversion coupe Forestry Tasmania operation photo August 2006





Platypus in the Mersey River, habitat threatened by chemicals from plantations.





Dazzler Ranges Northern Tasmania , Coupe BC057A Cable  
logged (early 2004) Gunns took most of the wood 95% of  
this coupe was woodchip Old Growth





Creekbed before cable logging



Dazzler Ranges Northern Tas, same creek before and after Logging



BC057A damage to vegetation caused by clearing around the stream and wind damage





Burrowing Crayfish holes below coupe stream near  
Branchs Creek ( BC057A Coupe)





Burrowing Crayfish (*Engaeus disjuncticus*)







Blackwood Creek road by Gunns to Gunns coupe August 2005



August 2005, 3 months after Gunns built the road .  
Blackwood Creek Northern Tasmania







Landslip Blackwood Creek caused by logging above, note man in centre top November 2005 (state forest land)



Branchs Creek Northern Tasmania (was pine forest) September 2005

Logged by Rayonier







Branchs Creek Northern Tasmania (September 2005)logged  
by Rayonier





Branchs Creek is this really good practice Pine logging (Sept 2005)



Branchs Creek Northern Tasmania Rayonier operation Sept. 2005







Poor road design Caveside northern Tasmania Gunns Private Timber Reserve no 0597 (September 2005) Caused turbidity in local streams used for Chudleigh town water supply



Caveside Northern Tasmania, logging fire Gunns coupe PTR0597

May 2006







Logging fire Gog Ranges Northern Tasmania June 2006 (Gunns Coupe)



Not enough money spent on road maintenance  
Railton Northern Tasmania this coupe is going to be  
logged soon

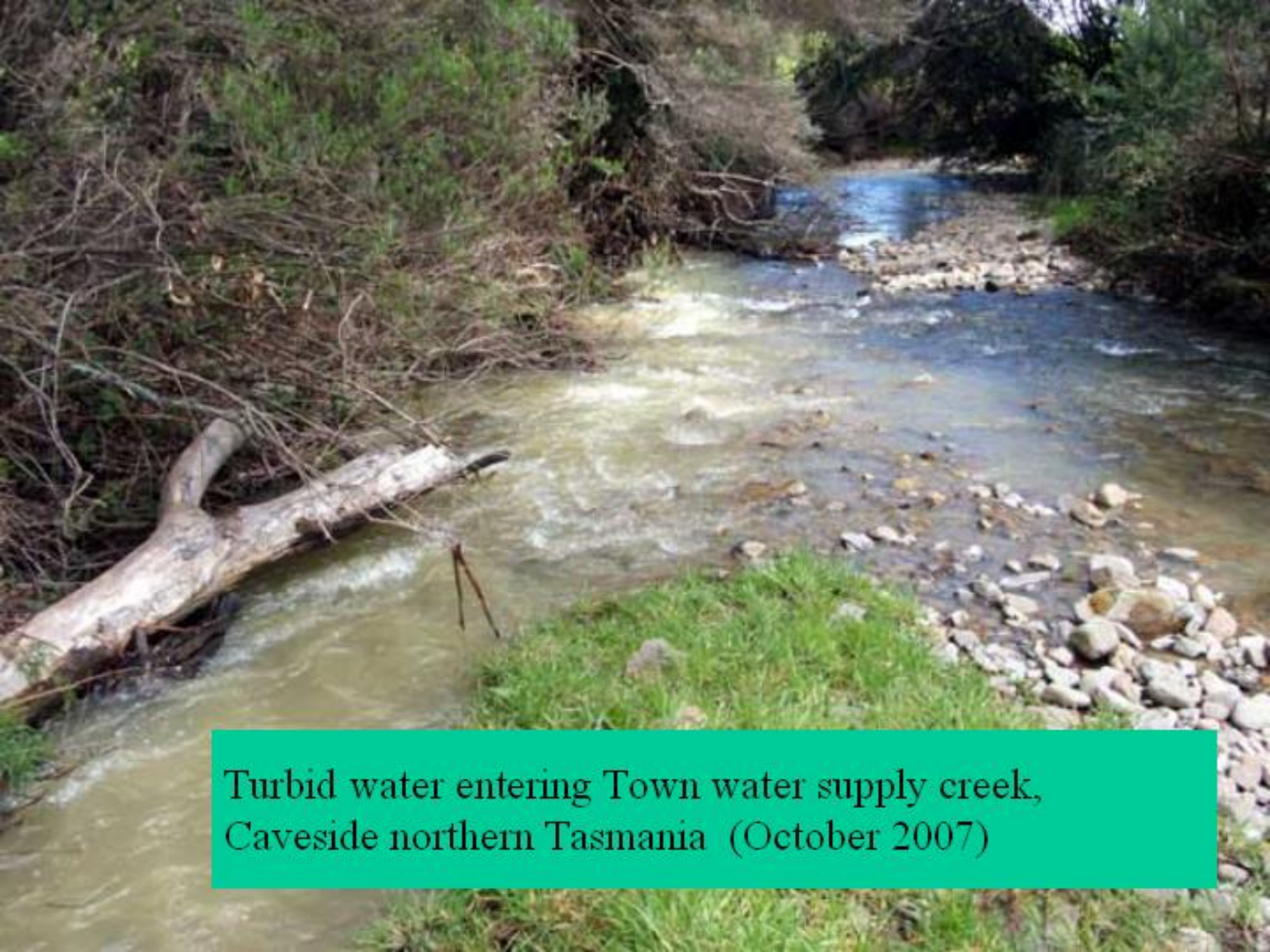




Sinkhole in Karst showing  
Turbidity caused by Gunns  
converting old farm to plantation  
above this sinkhole Oct 2007







Turbid water entering Town water supply creek,  
Caveside northern Tasmania (October 2007)





**TAMAR**

OPERATION N<sup>o</sup> T48805

COUPE HU 320X

CATEGORY Low Quality 15

High Quality 13

U.H.F. CHANNEL 16

PHONE RECEPTION Y/N

EMERGENCY MEETING  
POINT N<sup>o</sup> 56

JET HUNTSMAN ROAD  
AND MEANDER Falls RD





Burning logging waste Meander  
Tasmania (March 2007)



Burning on Meander Dam site March 2007 ( helicopter  
burn) This is recognised Quoll Habitat







Meander Dam Fire March 2007





Styx Valley Southern Tasmania logging coupe burnoff Jan 2007



Converted farmland, Targa northern Tasmania



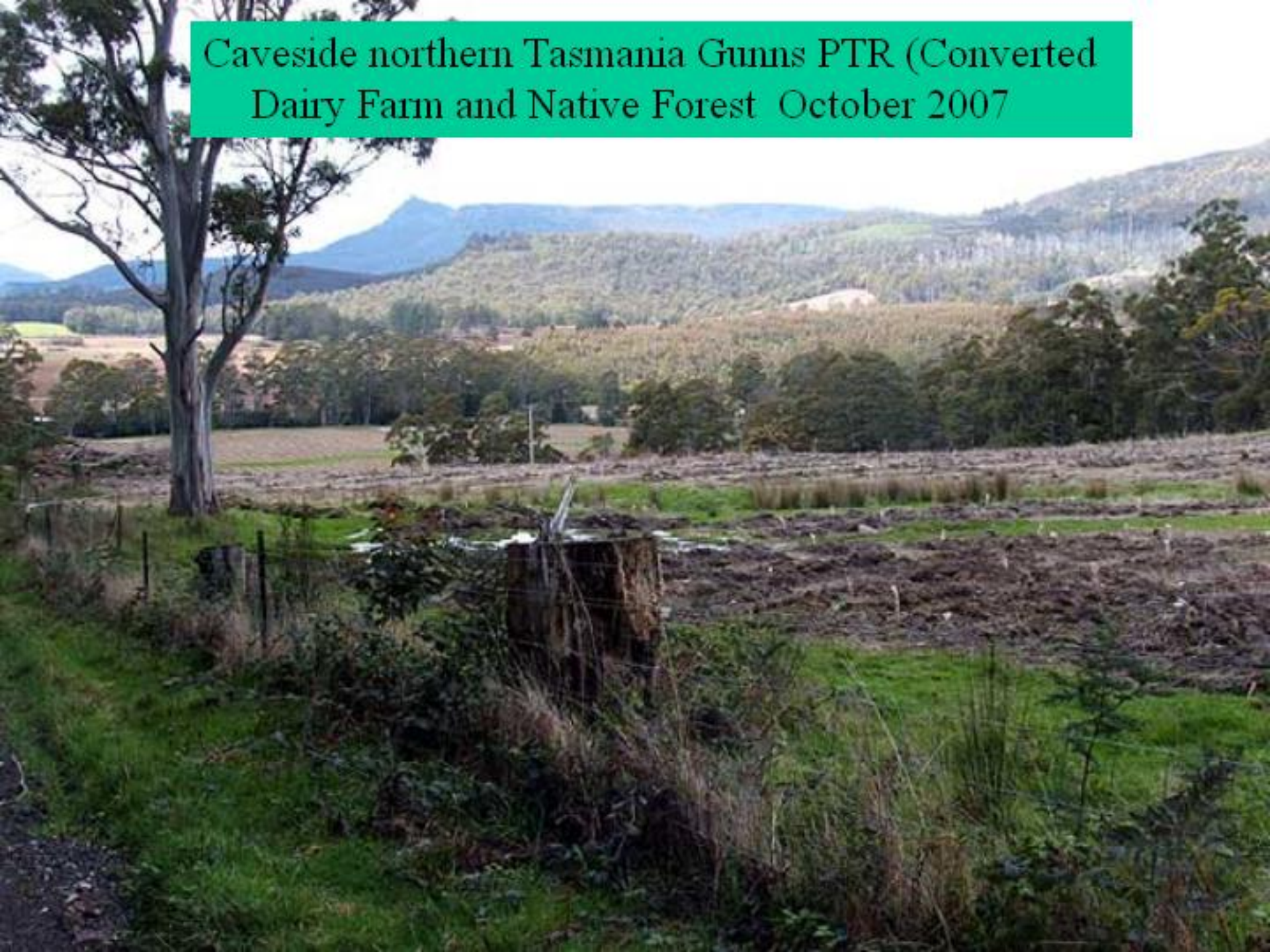




Log truck drivers are underpaid and have to rush  
We drive on the left of the road here



Caveside northern Tasmania Gunns PTR (Converted  
Dairy Farm and Native Forest) October 2007







Gunns PTR at Caveside conversion of native forest to  
plantation October 2007



Same coupe as before planting October 2007 Gunns Ltd





Northern Tasmania, Upper Blessington, native forest conversion to plantations (picture taken October 2007)







Upper Blessington, October 2007. Conversion of Native Forest to Plantation





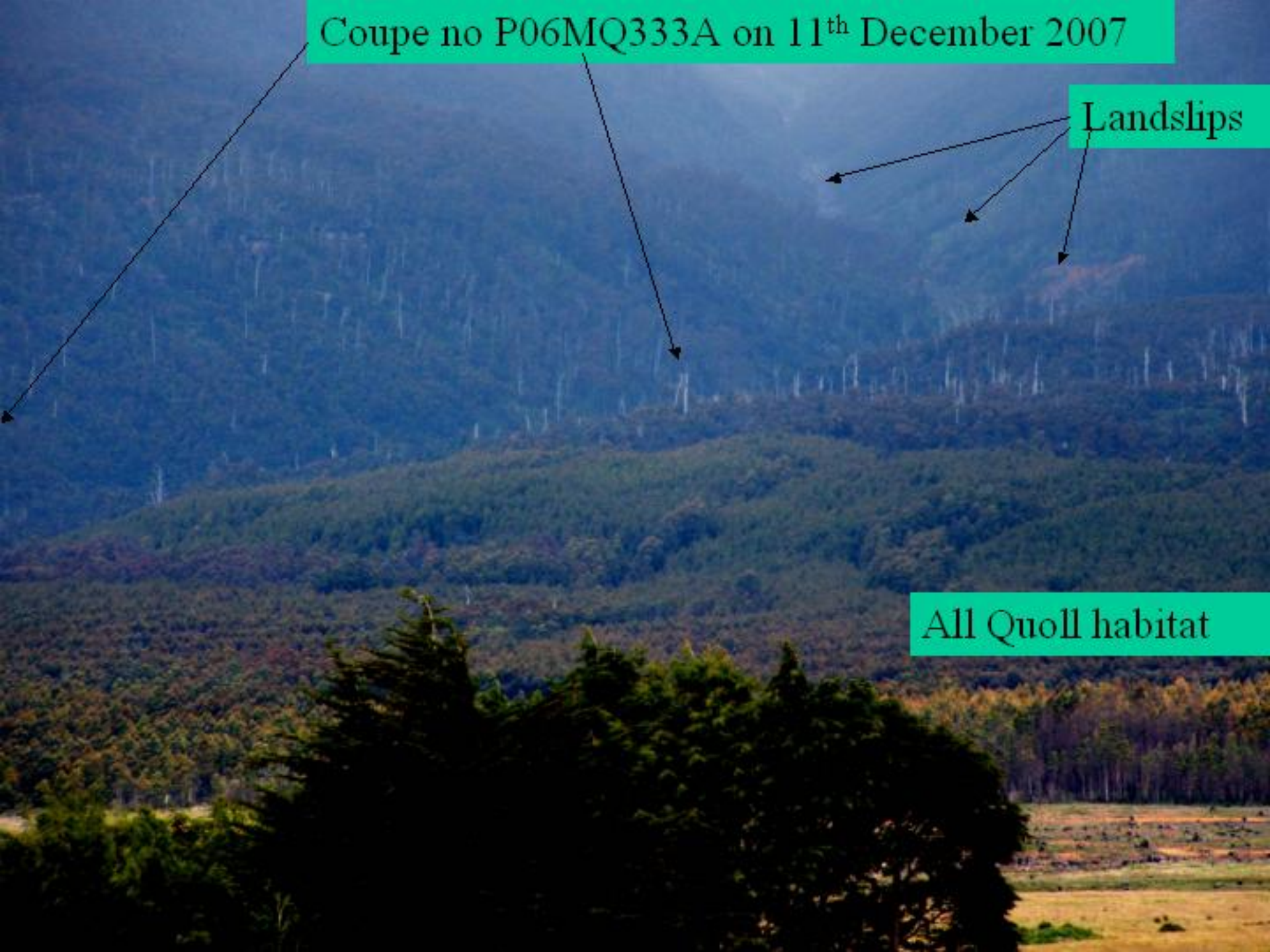
First rotation plantation grown on converted wet eucalypt forest



Coupe no P06MQ333A on 11<sup>th</sup> December 2007

Landslips

All Quoll habitat





**DANGER**

SHOOTING IN PROGRESS

**NO ENTRY**

BY ORDER

 **Gunns**  
LIMITED

10-000-0000



Bennets Wallaby, Gunns send shooters to kill the native animals who come onto the land where plantations are planted





Coupe no.P06MQ333A Dunnings  
Rivulet ( February 2008)







Coupe no P06MQ333A 6<sup>th</sup> December 2008 Conversion on Private land by Gunns Ltd



Dunnings Rivulet coupe P06MQ333A 6<sup>th</sup> December 2008 (Gunns ltd)





Coupe P06MQ333A Dunnings Rivulet  
6<sup>th</sup> December 2008 ( Gunns Ltd)







MQ238A

Gunns Coupe  
MQ238A Golden  
Valley Tasmania

Logged late  
2008 planned  
for  
conversion to  
plantation by  
Gunns

Image © 2009 DigitalGlobe

© 2008 MapData Sciences Pty Ltd, PSMA

Google

41°39'13.24" S 146°43'37.13" E

elev 709 m

Eye alt 1.33 km



 **Gunns**  
LIMITED **TAMAR**



THIS PROTECTIVE EQUIPMENT  
**MUST BE WORN**

OPERATION No. **GIL 699**

COUPE **MQ 238A**

CATEGORY **12** **13**

**15**

U.H.F. CHANNEL **13**

EMP No. **55** PH. RECEPTION **Y**

**CNR MEANDER & LAKE HWY**

Scott Signs

Conversion Coupe by Gunns ltd, logged October 2008 pictures  
December 2008



MQ238A large eucalypt stump











Tree ferns in windrow MQ238A



MQ238A Conversion coupe Gunns ltd  
streamside reserves logged in foreground







MQ238A note gully's cleared. No streamside reserves





MQ238A Gunns coupe, road around boundary showing that the forest here is Myrtle Rainforest



MQ238A coupe rainforest conversion to plantation







**TAMAR**

OPERATION No.

COUPE

CATEGORY

U.H.F. CHANNEL

PHONE RECEPTION

EMP No.

January 2008 Gunns conversion coupe South Mole Creek






Swamp in MQ140A January 2006  
This was destroyed during logging





MQ140A swamp gone 1<sup>st</sup> Dec 2007



A photograph of a dense forest. In the foreground, there are large, bright green ferns. Behind them, several tall, slender trees with light-colored bark stand vertically. The background is filled with more trees and foliage, creating a thick canopy. The lighting suggests a sunny day, with some areas being brightly lit and others in shadow.

MQ140A wet forest before  
logging



January 2008 MQ140A South Mole Creek





Large eucalypt stump MQ140A





t December 2007 MQ140A





Echidna, habitat destruction from clearfell operations threatens them





MQ140A 1<sup>st</sup> December 2007





Trees planted in old creek bed 31/8/08





Trees in old creek bed MQ140A 31/8/2008





1080

Parks and Wildlife Service

Permit No.

2803389

POISON LAID

DATE : 12/12/08

DEPARTMENT OF PRIMARY INDUSTRY, WATER AND ENVIRONMENT

1080 is a poison used to kill the native animals who may eat trees



This is a replanted plantation coupe in Golden Valley photo 1/1/09

One of the many places where Gunns put 1080 baits to kill the animals







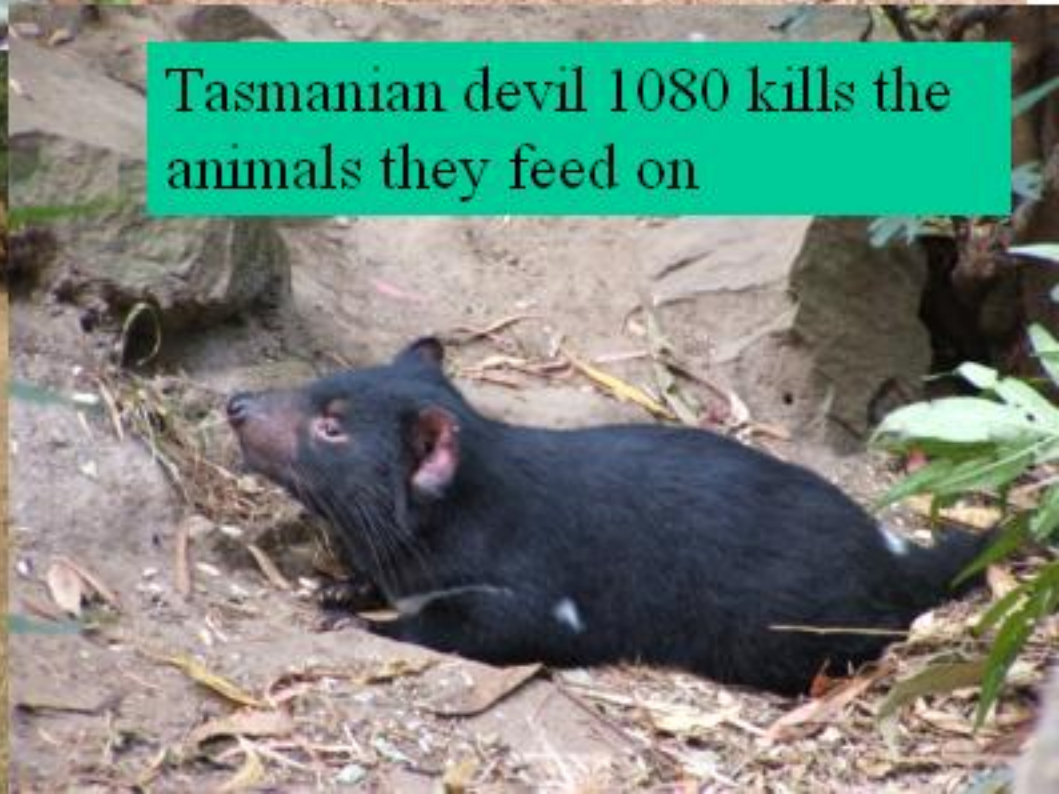
Wombat 1080 kills them



Wallaby, 1080 kills them

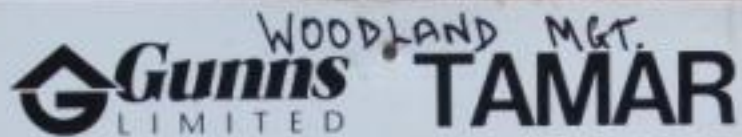


Kangaroo 1080 kills them



Tasmanian devil 1080 kills the animals they feed on





OPERATION No.

COUPE

CATEGORY

U.H.F. CHANNEL

PHONE RECEPTION

EMP No.

Native forest logging operation State Forest land Gunns operation appears to be return to native forest coupe





What the forest is like in this area before logging 24<sup>th</sup> March  
2008



Most of these trees are  
Tea tree that only grows  
in very wet areas 24<sup>th</sup>  
March 2008







Swamp and creek destroyed 24<sup>th</sup> March 2008





Large eucalypt stump





After burning no stream vegetation left 28<sup>th</sup> Dec 2008





Stream bed and vegetation burnt and destroyed 28<sup>th</sup> Dec 2008





Myrtle rainforest on edge of coupe 28<sup>th</sup> Dec 08



Orphaned Tasmanian Devils, threatened by facial tumour disease and habitat destruction







Spotted Tail Quoll, also threatened by habitat destruction