

This show is of the Tarkine forest.

The photos were taken in October 2009

We are led to believe that the Tarkine is an untouched area of rich diverse ancient forest.

It is, but unfortunately it is being destroyed at an alarming rate.

Much of the forest in the area where the proposed Tarkine logging loop road is to go has already been logged. Driving along the road there are narrow propaganda screens of native remnant forest hiding eucalypt plantations behind them. Many of the side roads have locked gates hiding the massive destruction going on right now.

The forest varies from Eucalypt forest (mainly *e.obliqua* or brown top stringy bark) to magnificent stands of rainforest (comprising Myrtle, Sassafras and Leatherwood). There are areas of mixed forest where eucalypts make up the overstory with a rainforest understory.

Forestry Tasmania are logging vast areas of these forests and converting them to plantations and to pure stands of seeded eucalypt forests

Some logging coupes south of Blackwater Road in the Tarkine



Image © 2009 DigitalGlobe

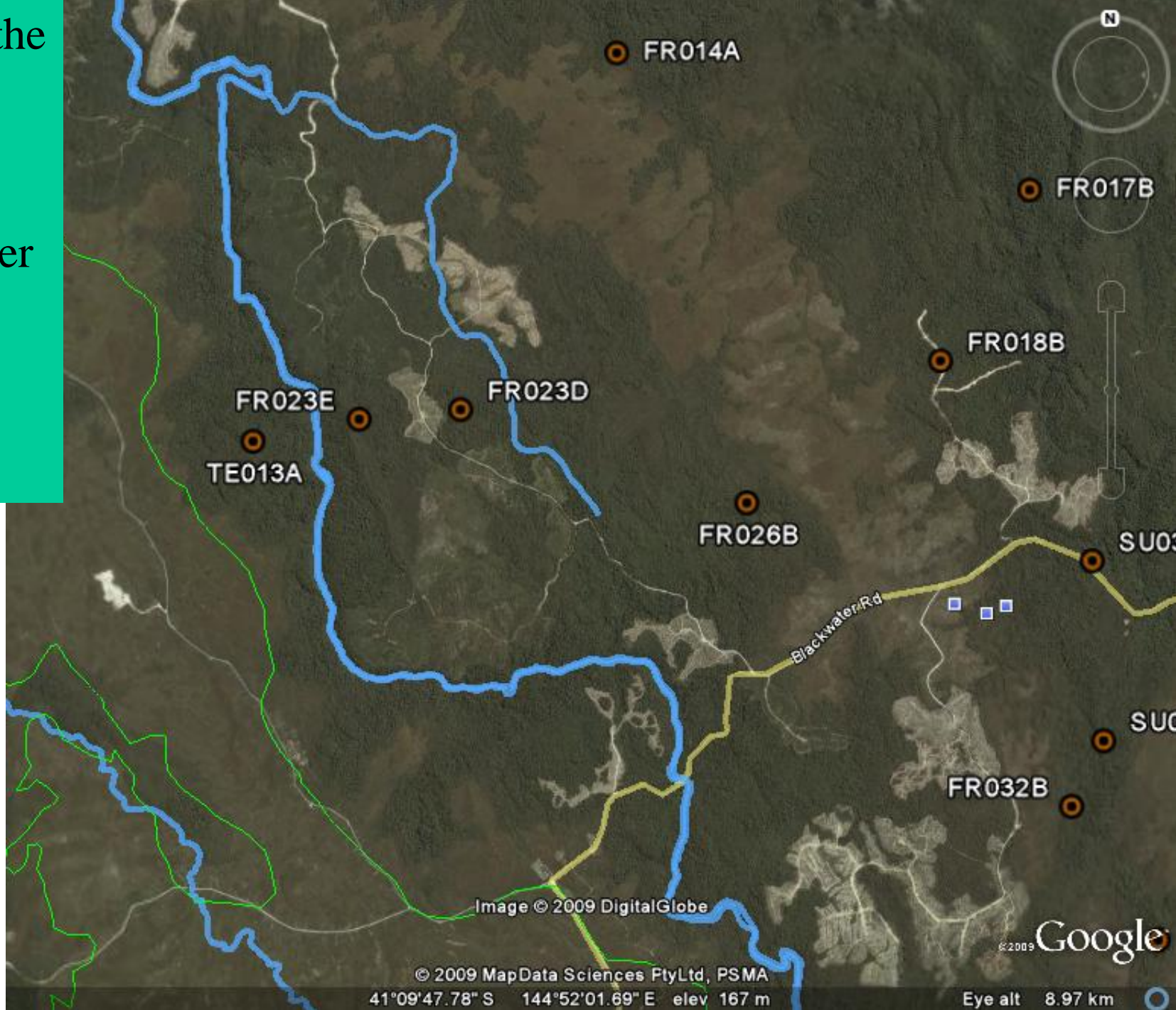
© 2009 MapData Sciences PtyLtd, PSMA
41°11'25.05" S 144°54'03.66" E elev 180 m

© 2009 Google

Eye alt 2.99 km

Some of the
logging
going on
North of
Blackwater
road.

Bye Bye
Tarkine



Arthur River

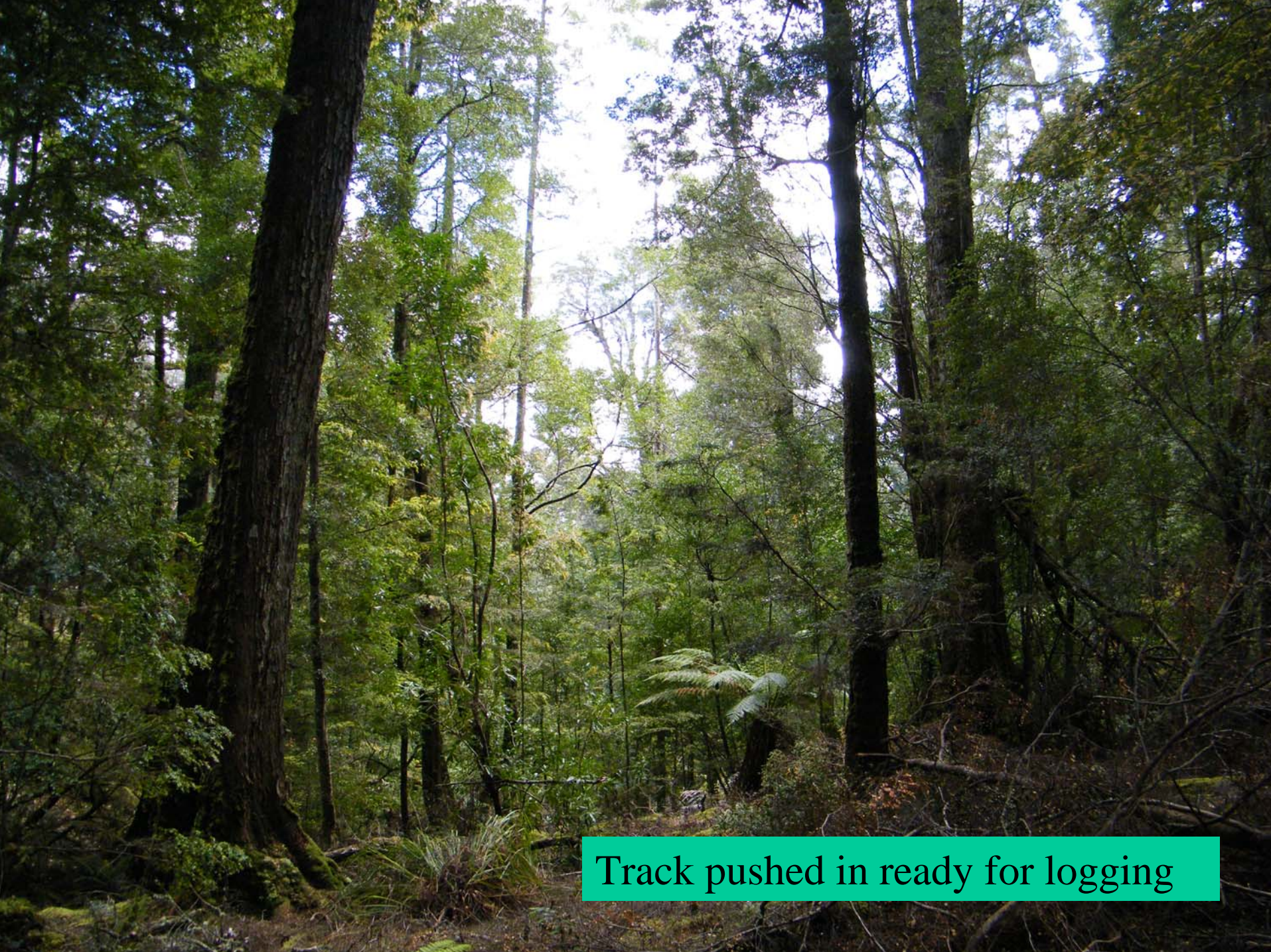


This is what the Tourists will see on the Tarkine logging road





Is logging rainforest and seeding eucalypts conversion?

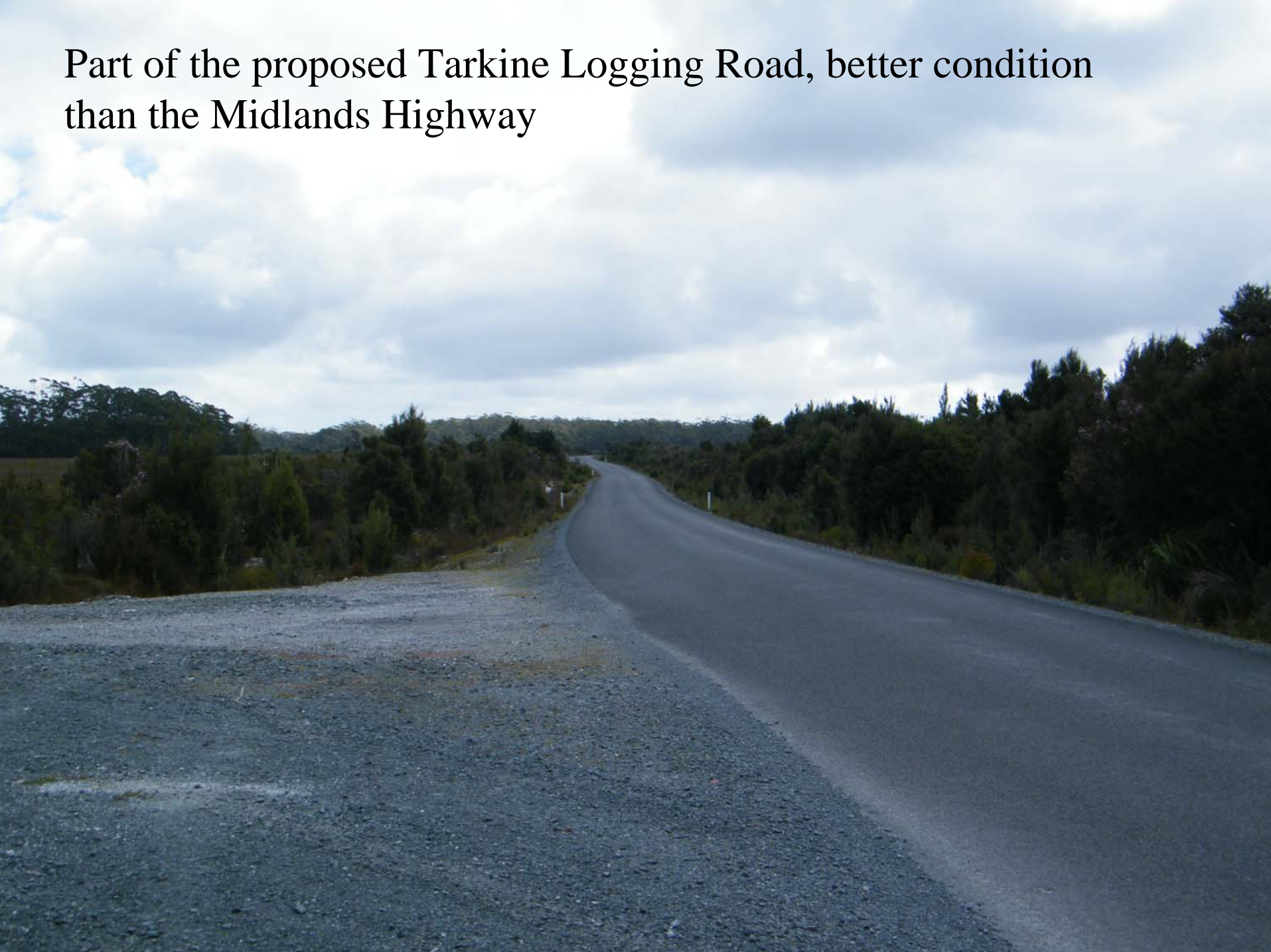


Track pushed in ready for logging

Remnants of rainforest logging coupe,
only eucalypt trees will be re planted.



Part of the proposed Tarkine Logging Road, better condition
than the Midlands Highway



According to FT they stopped conversion of native forest to plantation on the 31st Dec 2006.



These trees must be very slow growing if they have been in since
31st Dec 2006



No one will believe that FT planted these trees 3 years ago.



FT policy says “No broad-scale clearing of native forest to be initiated after 31st Dec 2006”. Their policies state “Native forest coupes commenced after 31st December 2006 must be returned to native forest” (FT Permanent Native Forest Estate Guidelines)





Beautiful e.obliqua forest being
turned into woodchips.



e.obliqua forest with rainforest understory including Myrtle, Sassafras and Leatherwood being converted to monoculture eucalypt forest



e.obliqua on the way to the chipper, note how straight the grain is on the log on top

Is logging a mixed species forest and only planting eucalypt conversion?
This is a disgrace to treat a magnificent diverse forest like this in
2009.No wonder they lock the gates so we can't see what they are up to.

